





WOMEN

TAGLIE (I) 40 - 52
SIZES (D) 34 - 46
TAILLES (F) 36 - 48

Osaka

Giacca sci fashion donna - *Women's fashion ski jacket*



stc-tech 20.000 + Metal / Glass

88% Nylon 12% Spandex
100% Nylon



Osaka

*Senza pelo
Without fur*

Osaka-FF

*Con pelo sintetico
With synthetic fur*

Osaka-PV

*Con vero pelo volpe
With real fox fur*

237 / 999



999 / 999



390 / 001



751 / 733

Colonna d'acqua > 20.000mm per spalle e cappuccio - Traspirabilità 10.000/mq/24h - Tessuto elasticizzato 4 vie - Cappuccio staccabile
Ghetta antineve - Taschino ski-pass - Tasche funzionali interne

Water column 20,000mm for shoulder and hood - Breathability 10,000g/sqm/24h - 4 way stretch fabric - Detachable hood
Snow gaiter - Ski-pass pocket - Functional inside pockets



WOMEN

TAGLIE (I) 40 - 52
SIZES (D) 34 - 46
TAILLES (F) 36 - 48

Yasemin

Giacca sci fashion donna - Women's fashion ski jacket



751 / 733



Metal / Glass + **stc-tech** 20.000

100% Nylon
88% Nylon 12% Spandex

Yasemin

Senza pelo
Without fur

Yasemin-FF

Con pelo sintetico
With synthetic fur

Yasemin-PV

Con vero pelo volpe
With real fox fur

100%
piuma
down



999 / 999



390 / 001



237 / 999

Colonna d'acqua > 20.000mm per spalle e cappuccio - Traspirabilità > 10.000g/mq/24h - Tessuto elasticizzato 4 vie - Cappuccio staccabile
Ghetta antineve - Taschino ski-pass - Tasche funzionali interne - Piuma interna fissata senza cuciture

Water column 20,000mm for shoulder and hood - Breathability > 10,000g/sqm/24h - 4 way stretch fabric - Detachable hood
Snow gaiter - Ski-pass pocket - Functional inside pockets - Down inside fixed with welding system

*Limited
Diva*



WOMEN

TAGLIE (I) 40 - 52
SIZES (D) 34 - 46
TAILLES (F) 36 - 48

Limited

Diva

Giacca fashion donna - Women's fashion jacket



390



Metal / Glass / Pearl

100% Nylon

Diva

Senza pelo
Without fur

Diva-FF

Con pelo sintetico
With synthetic fur

Diva-PV

Con vero pelo
With real fur

100%
piuma
down



751



237



999



005

Cappuccio staccabile - Tasche funzionali interne

Detachable hood - Functional inside pockets

*Limited
Diva*



WOMEN

TAGLIE (I) 40 - 52
SIZES (D) 34 - 46
TAILLES (F) 36 - 48

Eleonor

Giacca donna - *Women's jacket*

**Nylon BIO-DRW / Pearl
+ Soft-Shell 8.000**

100% Nylon
94% Polyester 6% Spandex + Fleece



999

100%
piuma
down



001



001999

Cappuccio staccabile

Detachable hood



WOMEN

TAGLIE (I) 40 - 52
SIZES (D) 34 - 46
TAILLES (F) 36 - 48

Suzanne II

Power-stretch mezza zip donna - Women's power-stretch half zip



390-9 / 999



Metal / Glass + VUELTA

100% Nylon
85% Nylon 15% Spandex

Suzanne II-FF

Con pelo sintético
With synthetic fur

Suzanne II-PV

Con pelo vero
With real fur



237 / 001



999 / 999



390-1 / 999



751 / 733

Tessuto garzato elasticizzato 4 vie - Protezione termica - Batteriostatico - Antipilling - Protezione UV - Tasca zip al petto
Tasche con zip - Fronte giacca trapuntata su tessuto anti-vento - Cappuccio bordato con pelo

4 way stretch brushed fabric - Thermal insulation - Bacteriostatic - Pilling resistant - UV protection
Zip pocket on the chest - Zipped pockets - Front jacket quilted on the wind proof fabric - Hood bordered with fur



WOMEN

TAGLIE (I) 40 - 52
SIZES (D) 34 - 46
TAILLES (F) 36 - 48

Sally

Power-stretch donna fashion zip lunga - *Women's fashion full zip sweater*



999

VUELTA + Astrakan

85% Nylon 15% Spandex
100% Polyester

Pelo sintetico
Syntetic fur



Tessuto garzato elasticizzato 4 vie - Protezione termica - Batteriostatico - Antipilling - Protezione UV

4 way stretch brushed fabric - Thermal insulation - Bacteriostatic - Pilling resistant - UV protection





WOMEN - Accessories

TAGLIE / SIZES I - II

Elasti

Cintura elasticizzata donna - *Women's elastic belt*

Elastic

Polyester + Spandex



999

Fibbia in metallo - Profilo in eco pelle ricamato

Metal buckle - Fake leather with embroidery



WOMEN - Accessories

TAGLIE / SIZES ONE SIZE

Sap Silk

Sottocasco - *Helmet lining*

Stretch Silk

95% Silk 5% Spandex



999

Antivento - Traspirante - Elasticizzato

Windproof - Breathable - Stretch



WOMEN

TAGLIE (I) 38 - 52
SIZES (D) 32 - 46
TAILLES (F) 34 - 48

GAVIA II

Pantalone sci donna - *Women's ski pants*

stc-tech 20.000

88% Nylon 12% Spandex
70% Nylon 15% Pes 15% Spandex



S181



S987



733



001



999



137



808

Colonna d'acqua > 20.000mm - Traspirabilità > 10.000g/mq/24h - Tessuto elasticizzato 4 vie - Termonastrato - Chetta antineve

Water column > 20,000mm - Breathability > 10,000g/sqm/24h - 4 way stretch fabric - Seam-taped - Snow gaiter



WOMEN

TAGLIE (I) 38 - 52
SIZES (D) 32 - 46
TAILLES (F) 34 - 48

MAZE

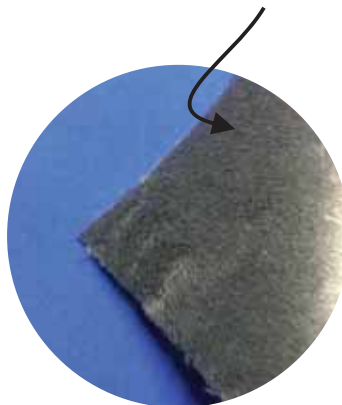
Salopette sci donna in soft-shell - *Women's soft-shell ski salopette*



stc-tech 20.000

94% Polyester 6% Spandex
+ Soft Bear Fleece

ULTRA SOFT-SHELL
BEAR FLEECE INSIDE



999

Colonna d'acqua > 20.000mm - Traspirabilità > 10.000g/mq/24h - Tessuto elasticizzato 4 vie - Chetta antineve fondo gamba

Water column > 20,000mm - Breathability > 10,000g/sqm/24h - 4 way stretch fabric - Snow gaiter on the bottom legs





WOMEN

TAGLIE (I) 38 - 52
SIZES (D) 32 - 46
TAILLES (F) 34 - 48



999



001



733

Courma

Pantalone elasticizzato donna - *Women's elastic pants*

Soft-Shell 8.000

94% Polyester 6% Spandex + Fleece

Colonna d'acqua > 8.000mm
Traspirabilità > 3.000g/mq/24h
Tessuto elasticizzato 4 vie

Water column > 8,000mm
Breathability > 3,000g/sqm/24h
4 way stretch fabric

WOMEN

TAGLIE (I) 38 - 52
SIZES (D) 32 - 46
TAILLES (F) 34 - 48



999



001



733

Avoriaz

Pantalone sci fashion donna - *Women's ski fashion pants*

Soft-Shell 8.000

94% Polyester 6% Spandex + Fleece

Colonna d'acqua > 8.000mm
Traspirabilità > 3.000g/mq/24h
Tessuto elasticizzato 4 vie
Ghetta antineve

Water column > 8,000mm
Breathability > 3,000g/sqm/24h
4 way stretch fabric
Snow gaiter



*Camouflage
Edition*

WOMEN

TAGLIE (I) 40 - 52
SIZES (D) 34 - 46
TAILLES (F) 36 - 48

Camo

Carezza III

Giacca sci fashion donna - *Women's fashion ski jacket*

stc-tech
10.000 Camouflage

100% Polyester
88% Nylon 12% Spandex



C-7

Carezza III

Senza pelo
Without fur

Carezza III-FF

Con pelo sintetico
With synthetic fur

Carezza III-PV

Con vero pelo volpe
With real fox fur



C-9

Colonna d'acqua > 10.000mm - Traspirabilità > 10.000g/mq/24h - Tessuto elasticizzato 4 vie - Cappuccio staccabile
Ghetta antineve - Taschino ski-pass -Tasche funzionali interne - Polsini regolabili con velcro

Water column > 10,000mm - Breathability > 10,000g/sqm/24h - 4 way stretch fabric - Detachable hood
Snow gaiter - Ski-pass pocket - Functional inside pockets - Adjustable cuff with velcro



WOMEN

TAGLIE (I) 40 - 52
SIZES (D) 34 - 46
TAILLES (F) 36 - 48

Camo

Sidney

Giacca sci fashion donna - Women's fashion ski jacket

stc-tech 10.000 Camouflage
+ Metal / Glass

100% Polyester
100% Nylon



C-9



Sidney

Senza pelo
Without fur

Sidney-FF

Con pelo sintetico
With synthetic fur

Sidney-PV

Con vero pelo
With real fur



C-7



C-1

Colonna d'acqua > 10.000mm per spalle e cappuccio - Traspirabilità 20.000/mq/24h - per spalle e cappuccio - Cappuccio staccabile
Ghetta antineve - Taschino ski-pass - Tasche funzionali interne

Water column 10,000mm for shoulder and hood - Breathability 20,000g/sqm/24h - for shoulder and hood - Detachable hood
Snow gaiter -Ski-pass pocket - Functional inside pockets



WOMEN

TAGLIE (I) 40 - 52
SIZES (D) 34 - 46
TAILLES (F) 36 - 48

Camo

Flower II

Power-stretch mezza zip donna - Women's power-stretch half zip

stc-tech 10.000 Camouflage + VUELTA

100% Polyester
85% Nylon 15% Spandex



C-1 / 001



Flower II-FF

Con pelo sintético
With synthetic fur

Flower II-PV

Con pelo vero
With real fur



C-9 / 999



C-7 / 733

Tessuto garzato elasticizzato 4 vie - Protezione termica - Batteriostatico - Antipilling - Protezione UV - Tasca zip al petto
Tasche con zip - Fronte giacca trapuntata su tessuto anti-vento - Cappuccio bordato con pelo

4 way stretch brushed fabric - Thermal insulation - Bacteriostatic - Pilling resistant - UV protection
Zip pocket on the chest - Zipped pockets - Front jacket quilted on the wind proof fabric - Hood bordered with fur



WOMEN

TAGLIE (I) 38 - 52
SIZES (D) 32 - 46
TAILLES (F) 34 - 48

Camo

Gavia II

Pantalone sci fashion donna - *Women's fashion ski pants*

stc-tech
10.000 Camouflage

100% Polyester



C-9



C-7

Colonna d'acqua > 10.000mm - Traspirabilità > 10.000g/mq/24h - Tessuto elasticizzato 4 vie - Termonastrato - Ghetta antineve

Water column > 10,000mm - Breathability > 10,000g/sqm/24h - 4 way stretch fabric - Seam-taped - Snow gaiter

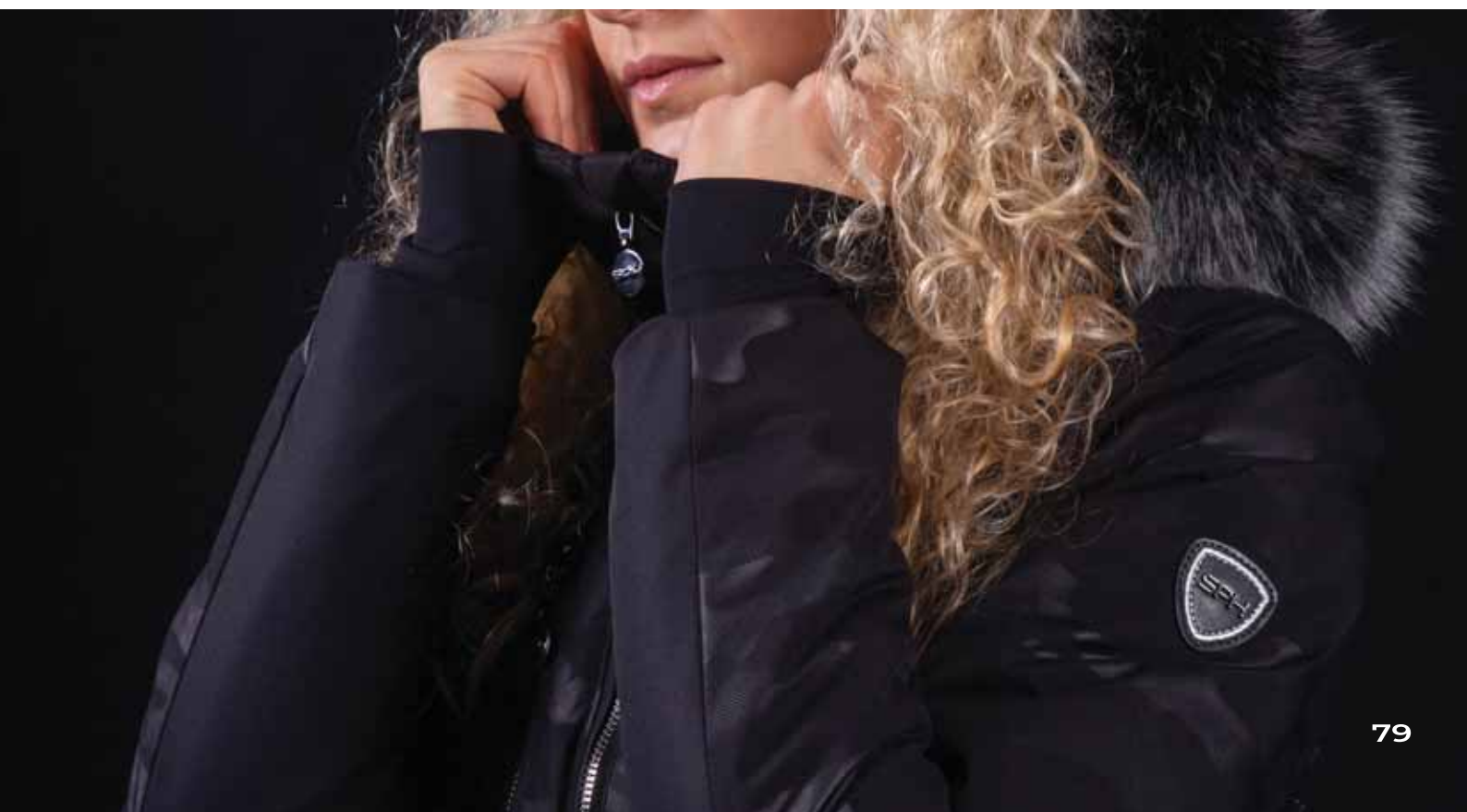






Photo credits @robytrabphotography

Thanks to SUNNY VALLEY KELO RESORT - Santa Caterina Valfurva



STECOL FLEX S.R.L. Via F. Baracca, 12/14 | 20056 Trezzo sull'Adda - MI - ITALY
Tel. +39 02 9090202 | Fax +39 02 9090225 | stecolflex@stecolflex.it

www.sph-sportsphere.it | [@sphsportsphere](https://www.instagram.com/sphsportsphere) | [#sphsportsphere](https://www.facebook.com/sphsportsphere)

